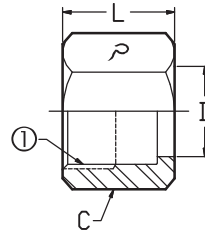


SAE 070110

Ref. Aeroquip 1290
 Ref. Parker BTX / 06B
 Ref. Weatherhead C5105



318
Tube Nut

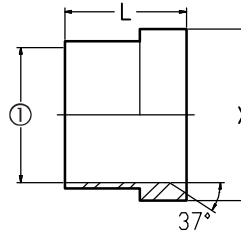
37° JIC
 Flare (Nuts)

Use with #319

318-① Part No.	Tube O.D.	① Female JIC Thread	C Hex	D Drill	L Length
318-02	1/8	5/16 - 24	3/8	0.179	0.55
318-03	3/16	3/8 - 24	7/16	0.241	0.61
318-04	1/4	7/16 - 20	9/16	0.304	0.62
318-05	5/16	1/2 - 20	5/8	0.373	0.68
318-06	3/8	9/16 - 18	11/16	0.439	0.73
318-08	1/2	3/4 - 16	7/8	0.568	0.85
318-10	5/8	7/8 - 14	1"	0.696	0.98
318-12	3/4	1 1/16 - 12	1 1/4	0.832	1.03
318-14	7/8	1 3/16 - 12	1 3/8	0.959	1.09
318-16	1"	1 5/16 - 12	1 1/2	1.087	1.13
318-20	1 1/4	1 5/8 - 12	2"	1.344	1.23
318-24	1 1/2	1 7/8 - 12	2 1/4	1.614	1.42
318-32	2"	2 1/2 - 12	2 7/8	2.164	1.75

SAE 070115

Ref. Aeroquip 900605
 Ref. Parker TX / 06S
 Ref. Weatherhead C5165



319
Tube Sleeve

Use with #318

319-① Part No.	① Tube O.D.	L Length	X Diameter
319-02	1/8	0.34	0.267
319-03	3/16	0.34	0.329
319-04	1/4	0.41	0.383
319-05	5/16	0.44	0.445
319-06	3/8	0.50	0.432
319-08	1/2	0.56	0.682
319-10	5/8	0.66	0.797
319-12	3/4	0.68	0.972
319-14	7/8	0.76	1.097
319-16	1"	0.78	1.222
319-20	1 1/4	0.91	1.534
319-24	1 1/2	1.12	1.784
319-32	2"	1.19	2.409